

HOTEL LIST

1US\$ =120.27 JPY (6. 5. 2007)

1. Sunroute Hotel Tokushima

- **Price**

Special seasonal price!!

- One person

One Single-Bed Room : JPY 6825

One Double-Bed Room : JPY 7825

- Two persons

One Double-Bed Room : JPY 10710

Two Single-Bed Room : JPY 12600

- **Location:** 1-minute walk from JR Tokushima Station

- **Check IN/OUT:** 14:00/11:00

- **Internet connection:** Free!!

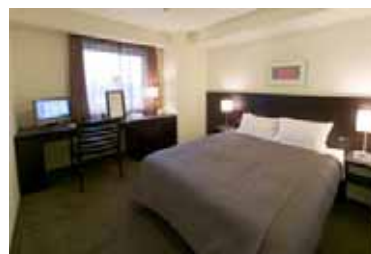
- **Hot spring bathhouse:** Free!!

- **Breakfast:** JPY 1,000

- **Room photo**



Single



Double

- <http://www.sunroute.jp/SunrouteTopHLE.html>

2. HOTEL CLEMENT TOKUSHIMA

- **Price:** S: JPY 10,164 – 11,550 T: JPY 19,635 – 21,367

Internet Booking Price: S: JPY 8,000 – 9,800

T: JPY 13,650 – 17,500

- **Location:** Next to JR Tokushima Station

- **Check IN/OUT:** 13:00/11:00

- **Internet connection:** Free!!

- **Sauna:** JPY 1,300

- <http://www.hotelclement.co.jp/english.html>

3. FOR SEASON TOKUSHIMA

- **Price:** S: JPY 5,800 T: JPY 11,600
- **Location:** 3-minute walk from JR Tokushima Station
- **Check IN/OUT:** 15:00/10:00
- **Internet connection:** Free!!
- **Breakfast:** Included
- **Room photo**



Single

- <http://www.fshotel.jp/> (in Japanese)

4. TOYOKO INN TOKUSHIMA

- **Price:** S: JPY 5,800 D: JPY 7,800 T: JPY 7,800
- **Location:** 9-minute walk from JR Tokushima Station
- **Check IN/OUT:** 16:00/10:00
- **Internet connection:** Free!!
- **Room photo**



Single

- <http://www.toyoko-inn.com/hotel/00116/index.html> (in Japanese)

* If you need some helps for reservation of Hotel,
contact us: ndes07@is.tokushima-u.ac.jp